



NTPC has done it again

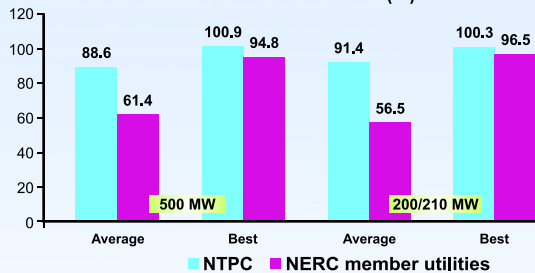
NTPC achieves highest ever monthly generation of 19.2 Billion Units in January, 2009

Benchmarking operational performance with world standards :
NTPC units were compared with clusters of 200-220 MW capacity and 475-525 MW capacity units. As per North America Electric Reliability Corporation (NERC) data, NTPC performed better than comparable utilities. Such global comparisons keep us alert about the best practices and trends.

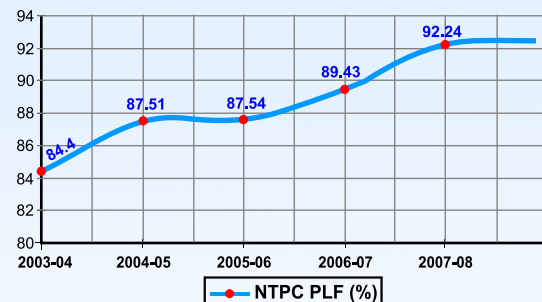
The following eight stations of NTPC achieved more than 100 % PLF in the month of January'09

STATION	PLF(%)	STATION	PLF(%)
Rihand	104.49	Dadri (Coal)	101.72
Korba	103.71	Tanda	101.47
Vindhyachal	102.67	Ramagundam	100.65
Simhadri	102.28	Talcher Thermal	100.18

NTPC units stand tall amongst global peers in terms of Plant Load Factor (%)



Impressive Track Record - Testimony of O&M excellence



With 19.11% of the country's capacity, NTPC accounted for 28.51% of the total power generation in India in the year 2007-08. With present installed capacity of 29894 MW, the company is poised to become a 75000 MW plus power utility by 2017.



NTPC Limited
(A Government of India Enterprise)

www.ntpc.co.in